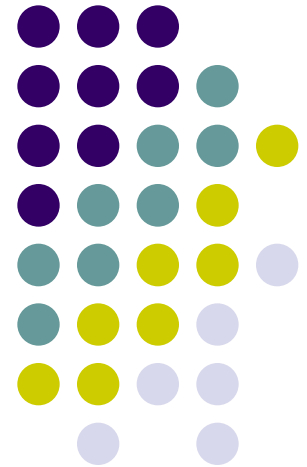


Qualicum – Graham Park Community Association AGM

October 19, 2011



Scott Pegrum – President QGPCA

Important: No wine with the cheese this year



Guests:

- Councillor Rick Chiarelli
- Dwight Breault - Queensway Carleton Hospital
- Kevin Wherry – City of Ottawa Parks
- Sue Maisonneuve – City of Ottawa Program Manger

Agenda

- Introduction (7:10)
- C.A Financial report (7:15)
- Voting of C.A. Executive (7:20)
- Queensway-Carleton Hospital Expansion update (7:25-&7:40)
- 48 Nanaimo Drive and 25 Esquimault Update
- 2187 Baseline and 2940 Baseline Development Update
- Valleystream Update
- New business or motions



Financials (2010-2011)

Financial Summary - Year Ended Aug 31, 2011



	<u>Revenue</u>	<u>Expenses</u>	<u>Net</u>	<u>Prior Yr Net</u>
General	-	737.00	(737.00)	(1,016.64)
Community Day	2183.2	3052.7	(869.50)	(1,771.43)
Pilates	6692.18	5,910.00	782.18	132.00
After 4 Program Dividend	0	-	-	-
Karate	1635	1472	163.00	326.00
Community Center Rental	16.92	534.04	(517.12)	(116.32)
AGM/Association Expenses	-	290.34	(290.34)	(353.39)
Memberships	1,755.00	0	1,755.00	1,630.00
Winter Carnival	-	531.76	(531.76)	(554.30)
Playgroup	100.00	42.77	57.23	375.50
Yoga	3,274.00	2,175.00	1,099.00	1,027.00
Donations	300	0	300.00	500.00
Rink Maintenance	2600	1630	970.00	761.49
Area Soccer Parks	0	570.84	(570.84)	-
Total Programs	<u>18,556.30</u>	<u>16,946.45</u>	<u>1,609.85</u>	<u>939.91</u>

Bank Balance as of Aug 30, 2010	10,273.98
Canada Savings Bond	11,115.44
Money Market Account (Aug 31, 2011)	3,023.10
Net Cash Balance - per Bank Aug 31, 2011	11,883.83

Exec Slate for 2011-12



- Scott Pegrum - President
 - Lauria Blackwell - Vice President
 - Jeff Wills - Treasurer
 - Linda Ryan - Secretary and bulletin distribution
 - Brett Caldwell - Hospital issues
 - Sarah Sumner – Community Centre
 - Alison Buchanan - Social
 - Jill Dublin - membership
-
- Nominees from the floor?

CA non-executive Positions

- Trina Pearce: Bulletin
- Leo Paoletti: Web Master and Traffic
- Jeff Braddon: Rink





Motion to move QGPCA HQ

Change of address of the HQ of incorporation requires a motion at a general meeting of the corporation.

“For the purposes of incorporation the head quarters of the QGPCA will be located at 48 Nanaimo Drive”



Motion to spend Capital

- Part of good governance is to seek membership approval for major capital expenditures.
- We will be furnishing the new CC with
 - Stove: ~ \$600
 - Audio/Visual: ~ \$3000
 - Program equipment. ~ 1000.00
 - Dishwasher ~\$600

Motion “To approve the executive to spend up to \$ 6000.00 for furnishing the community centre”



Organization Health Check

- Governance: Job Descriptions created
- Strategic Planning: 2011/2012
 - Draft and publish organization by-laws
 - Draft and publish rules and regulation (day to day business)
- √ Finances
- √ Practices
- Membership- drive new memberships and new participation in the executive.



Expanded boundaries:

- The executive voted to expand the CA boundaries to include Hickson Crescent and Baylie Ave due to the residents significant use of our CA services over the past 5 or 6 years.



Queensway-Carleton Hospital



Queensway Carleton
Hospital

25 Esquimalt Redevelopment

48 Nanaimo



48 Nanaimo:

MID AUG - MID OCT

Exterior Building Construction

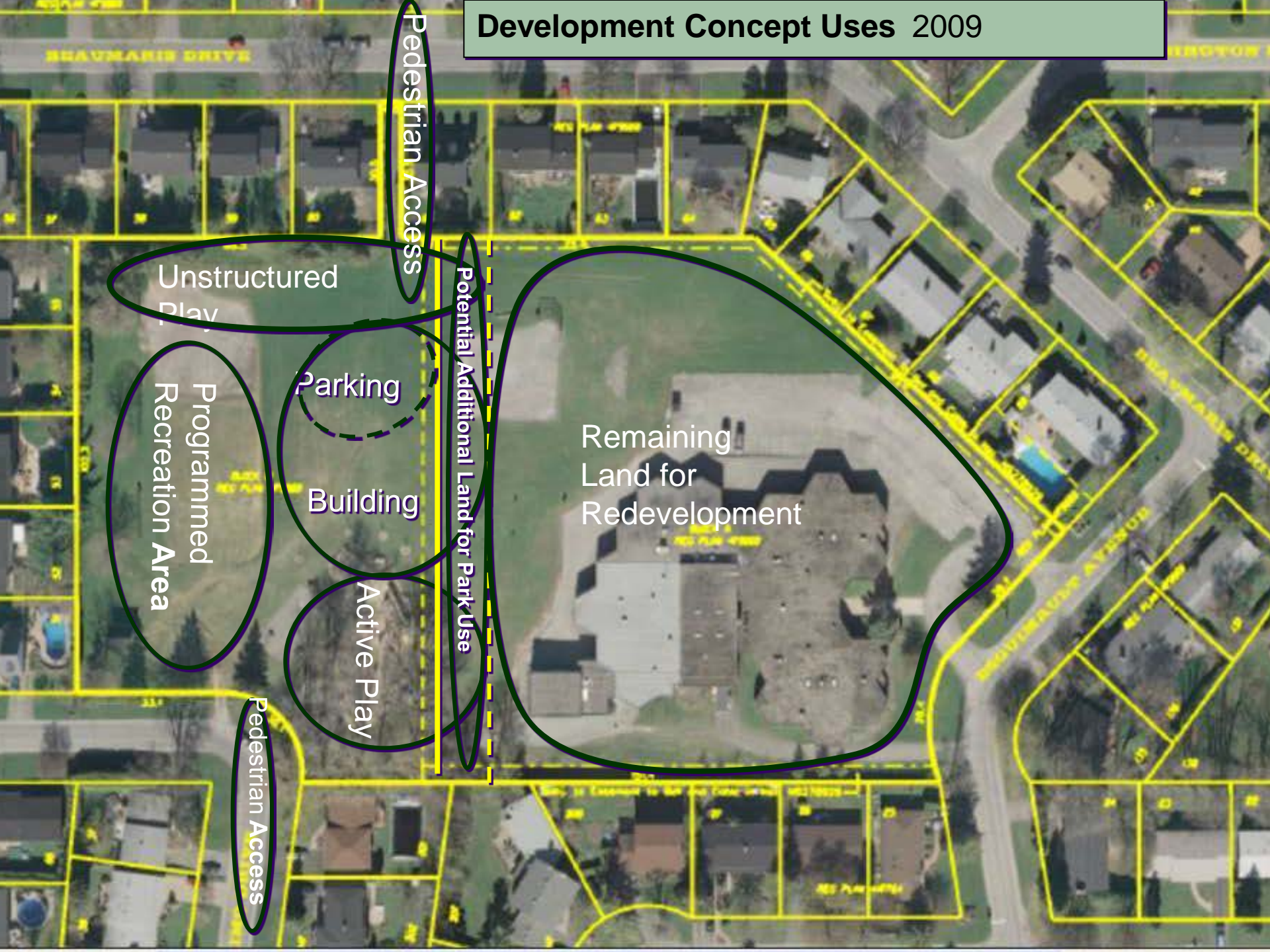
Exterior Wood Framing, Roof Framing and Sheathing
Installation of windows, doors, Masonry/siding

SEPT - END DEC

Interior Fit up and Landscaping

Partitions, electrical, mechanical, door frames, mill work
Flooring, Drywall, Finishing, Painting
Landscaping, Parking lot, curbs, sidewalks

Development Concept Uses 2009



Pedestrian Access

Unstructured Play

Parking

Programmed Recreation Area

Building

Active Play

Pedestrian Access

Potential Additional Land for Park Use

Remaining Land for Redevelopment

Qualicum Graham Park
25 Esquimault Avenue

2009 View

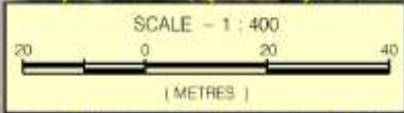
Unstructured
Play

Soccer
Field

Parking
Building

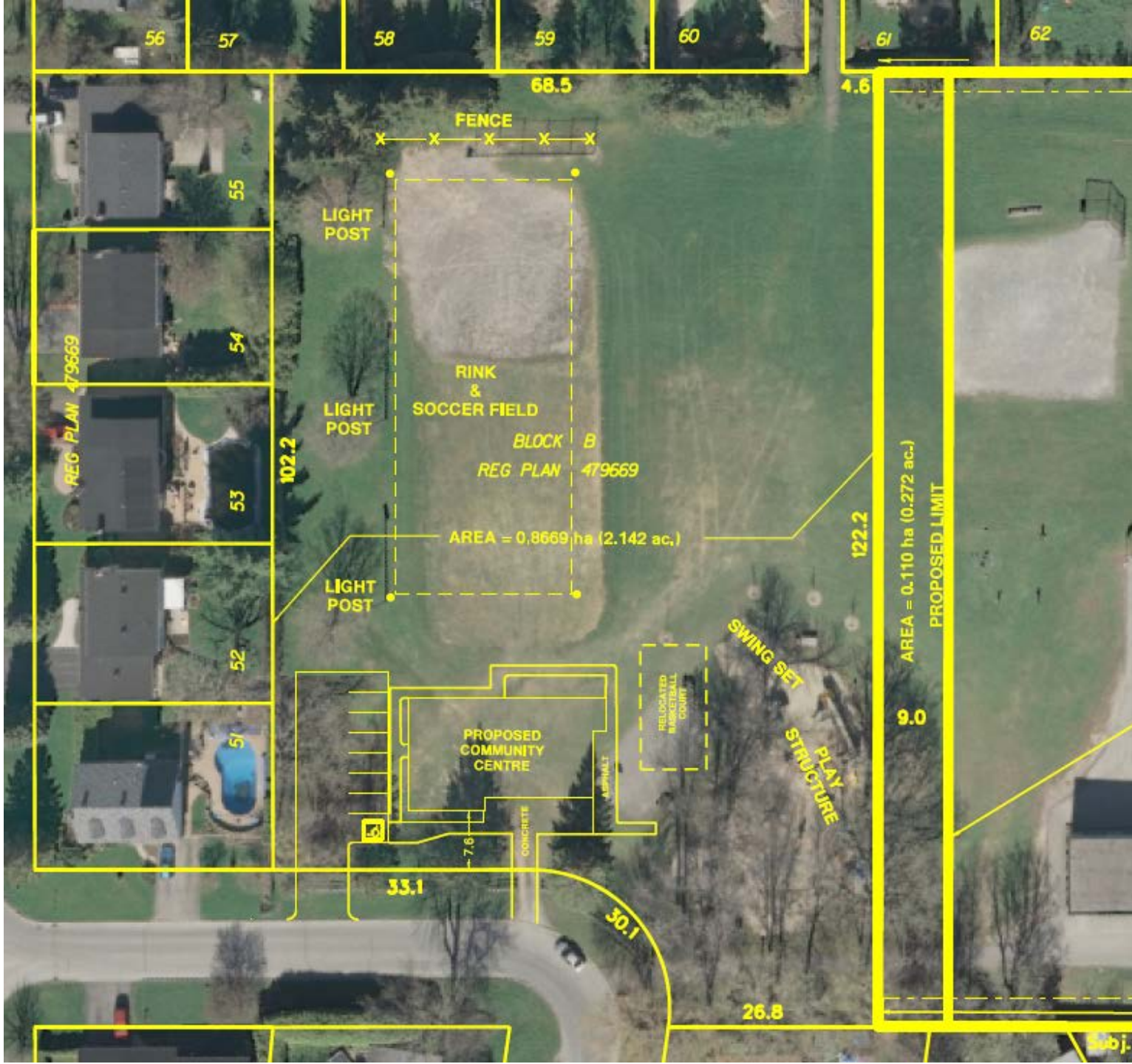
Active
Play Area

Residential
Development
Potential



Ottawa INFRASTRUCTURE SERVICES
DEPARTMENT
SURVEYS & MAPPING UNIT

PROJECT : GRAHAM PARK	
PHOTOGRAPHY : SPRING, 2007	COMPUTER NO. 12261
C.A.D. BY : M.P. GALLAGHER	MS NO. 12261-BE.DGN
CHECKED BY : B. LYNCH	DRAWING NO.
PTN. TABLE : NONE	DATE : 2009/07/29



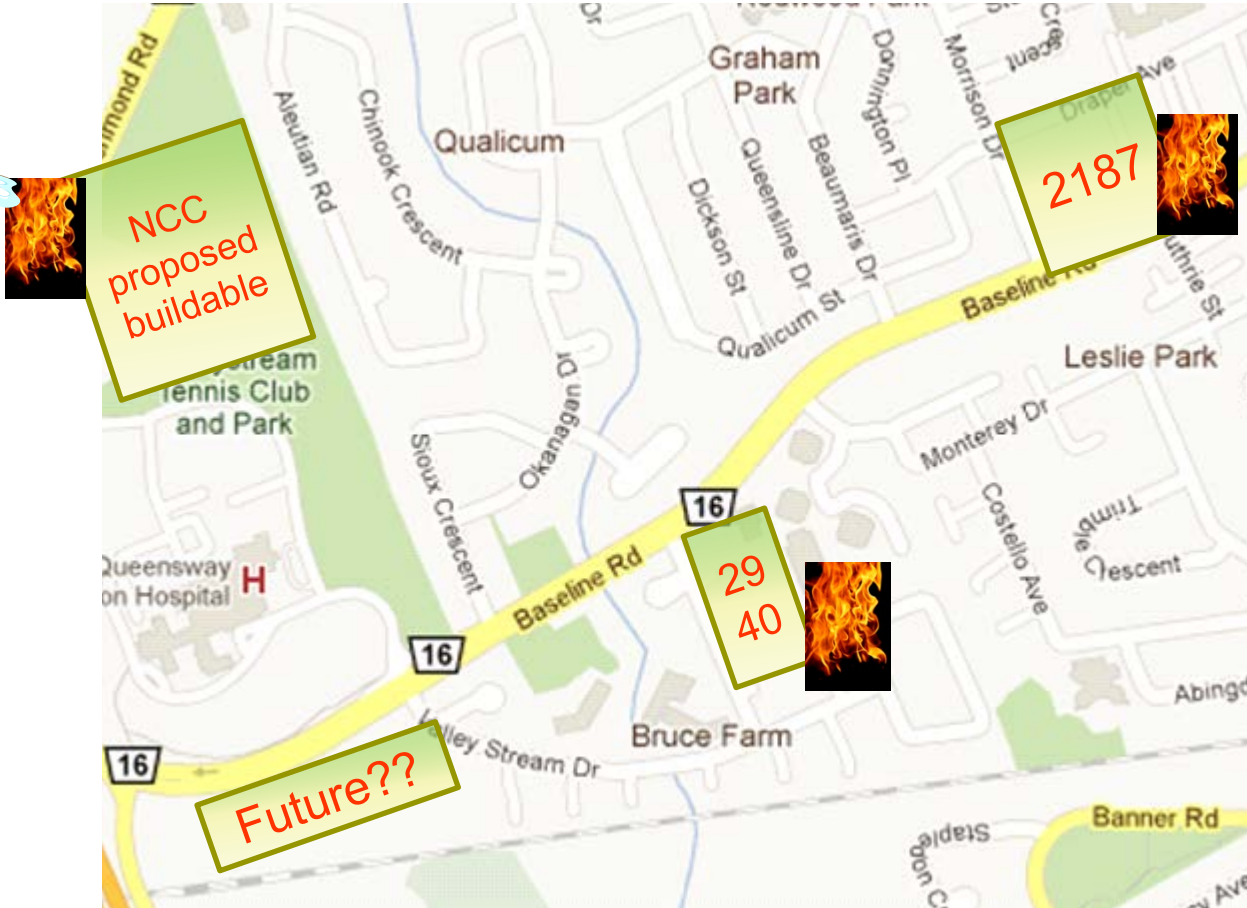
Measurements in metres

25 Esquimault Redevelopment Community Centre



- New CC to be completed Dec 2011
- Land Addition to Nanaimo Park
 - First proposal by our councillor/Staff was the addition of 0.75 acres (AGM 2008).
 - Council approved plan to include 0.5 acres
 - current proposal is .272 acres.

The Development Angst



1200 Units
proposed
between 2187
and 2940
Baseline!

NCC Valleystream



What was done

- Participated in the greenbelt advisory board
- Petition circulated
- Press coverage in Sun
- Local residents voiced their concern at the sportsplex open house
- QGPCA Objections filed with the NCC

NCC Response

- The last word from the NCC planning consultant was that it was unlikely that this area's designation would change from greenbelt to "Buildable". Final recommendations are going to NCC board of directors scheduled for November.



Morrison and Draper Development

2187 BASELINE



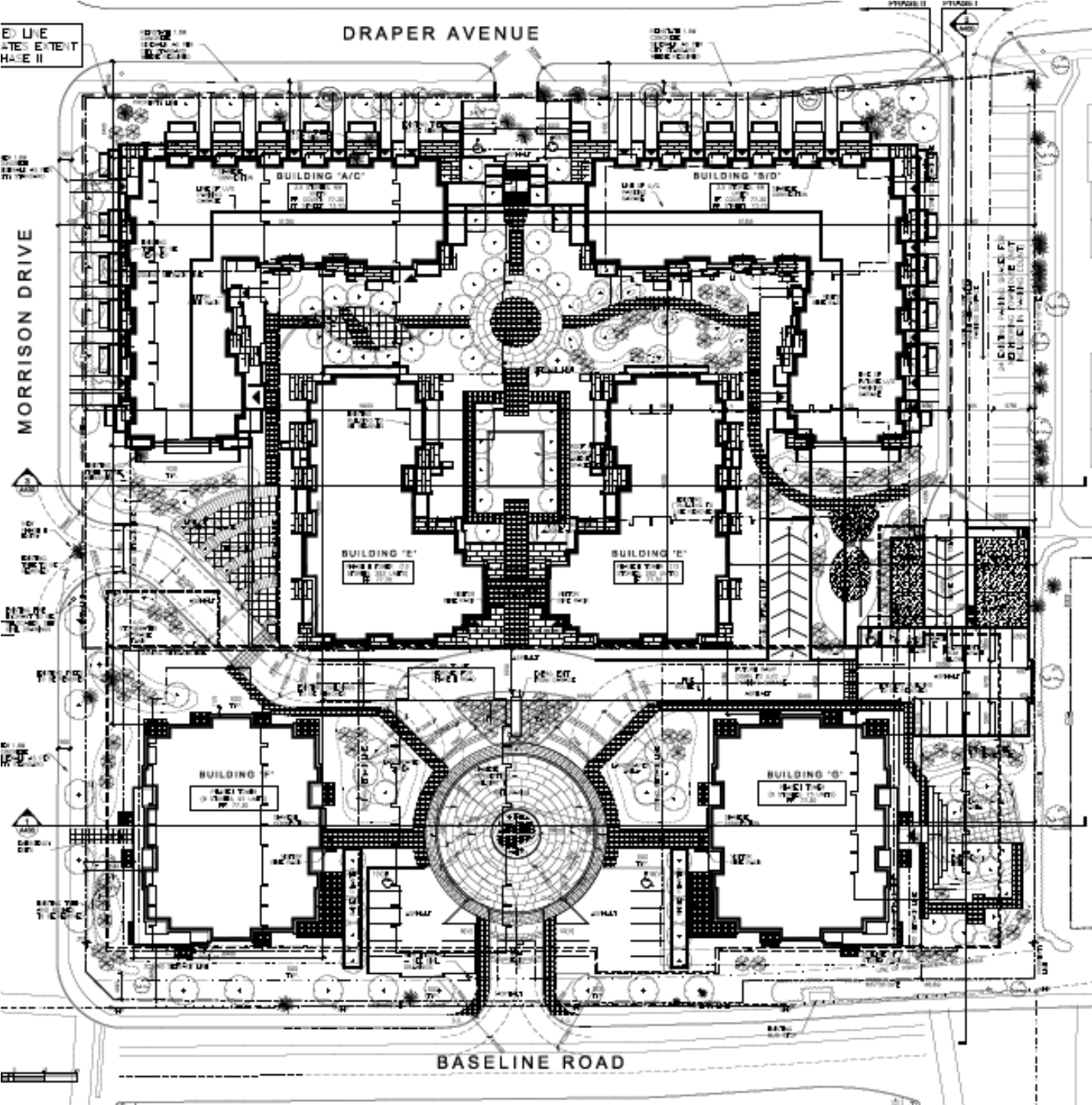
Original
334 Unit
Design



MORRISON-DRAPER

Proposed
Development





Site Plan
 Modifications
 filed Aug 22
 2011

598 Units

Developer:
 Greatwise

Comparison



Building	Stories	Units	Parking	<u>Proposed Revisions (* buildings subject to application)</u>			
				Building	Stories	Units	Parking
A	4	34	48	A/C*	3.5	68	82
B	4	34	48	B/D*	3.5	68	82
C	3	13	19	E*	12	292	351
D	3	13	19	F	8	97	123
E	12	108	152	G	6	73	88
F	8	71	101				
G	6	61	87				
TOTAL		334	474	TOTAL		598	726

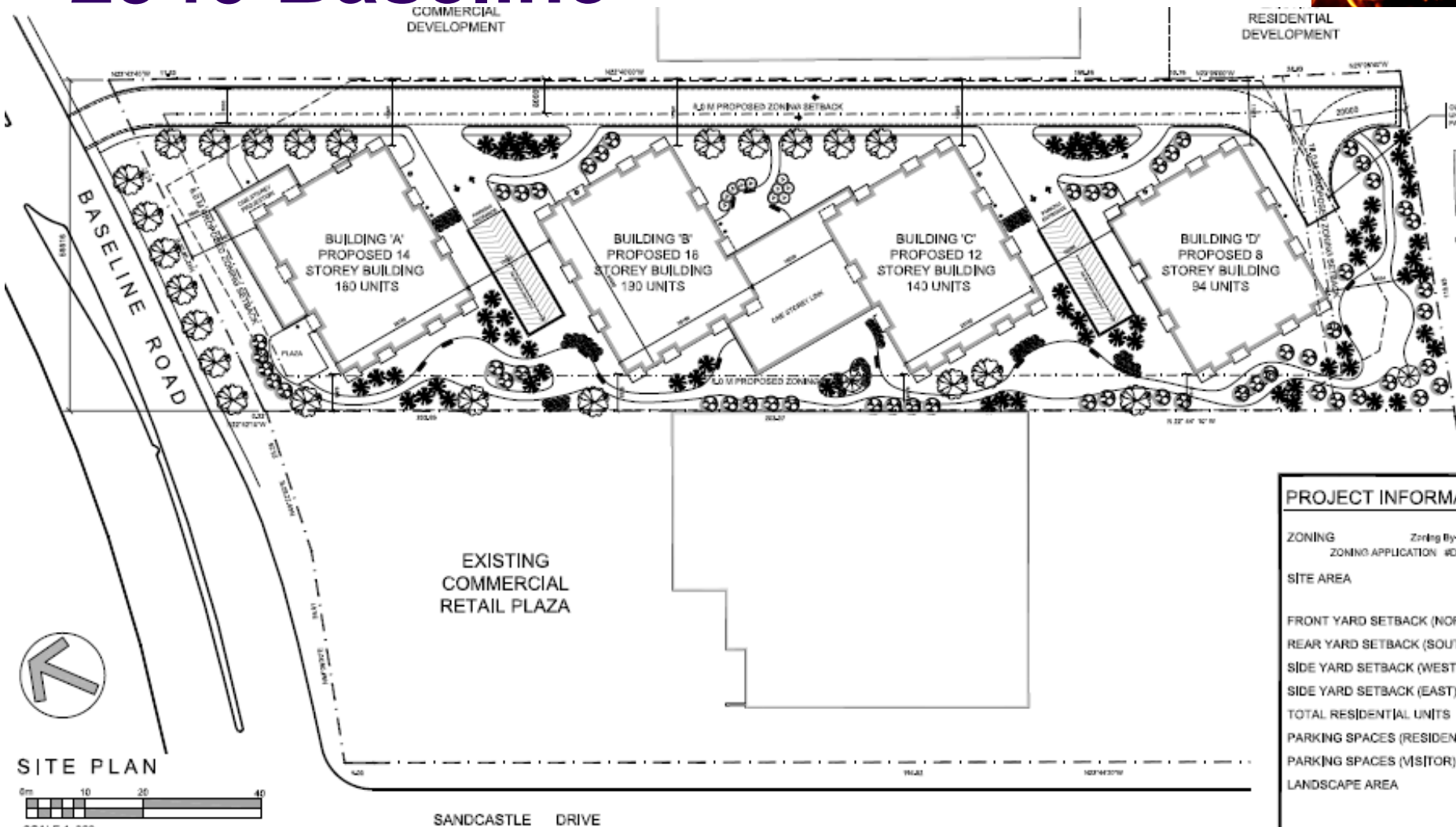
Proposed: 264 unit increase,

2187 Baseline concerns



- Traffic, Traffic, Traffic
 - Baseline dysfunctional at rush hour
 - Neighbourhood cut through traffic
- Safety of school children to St-Paul's
- Scale and size of the development

2940 Baseline



Profile



6 EAST SIDE ELEVATION
SCALE 1:200

Status



- Local concerned citizens from QGP, LP, and Valleystream have formed a steering committee to oppose the development
- It is currently zoned 7 storey commercial
- Application is currently on hold

Concerns



- Traffic, Traffic, Traffic
 - Baseline dysfunctional at rush hour
 - Neighbourhood cut through traffic
- Safety of school children to St-Paul's
- Scale and size of the development

Community Centre



- Sarah Sumner is the coordinator

Ash Borer



- The emerald ash borer, an invasive wood-boring beetle first discovered in the city three years ago, has spread from Orleans all the way to Kanata, city officials confirmed
- It is fatal to all Ash trees





Ash Borer

- Residents are urged:
- Not to move firewood out of Ottawa and Gatineau or into adjacent communities
- Be aware of [regulations for firewood and ash products](#)
- Not to [bring firewood to your cottage or campsites](#)
- To buy your firewood locally and know where your firewood originates
- To obey all [ministerial orders](#) issued by the federal government
- To remember, even after an infested tree has been cut down, the EAB continues to live in the wood

Community police station



- 245 Greenbank Road
- The telephone number is 236-1222, ext. 2242
- This Centre offers a number of services. For example, it has trained volunteers from the community who can inspect your home and recommend ways to upgrade your security.



Crime and safety

- Community Constable Constable Karin Montague
- Community Police Office: 245 Greenbank Road
- Tel: 236-1222, ext. 2179 or by email at montaguek@ottawapolice.ca



PREMISES PROTECTED
SURVEILLANCE DE QUARTIER

Neighbourhood Watch



- Len Grummett is the long-time coordinator
- Details about our program available at www.qualicum.org
- Police details at: http://www.ottawapolice.ca/en/crime_prevention/neighbourhood_watch/get_involved.cfm
- Child print: http://www.ottawapolice.ca/en/crime_prevention/child_print/index.cfm





Safety issues

- Lamp posts should be turned on – you might be able to use low wattage fluorescent bulbs – and can be turned on with a light sensor
- Walking at night – try flashlights, warning lights, or reflective bands/tape
- Speeding: to be further discussed in Traffic

Dogs in the parks - updated



- Dogs are not allowed in Nanaimo Park.
- Dogs are allowed on leash in Mohawk, Qualicum, and Okanagan parks. Owners are reminded that they must remove dog waste and dogs are not permitted within 5 metres of children's play areas.
- See details at http://www.ottawa.ca/residents/animal_care/cats_dogs/dogs/parks/nepean_en.html#P247_3377

Street parking and snow plowing



- Street parking

http://ottawa.ca/residents/parking/regulations/on_street_restrictions_en.html

(3 hours between 7:00 a.m. and 7:00 p.m.)

- Many complaints about snow plowing last winter – it seemed many side streets were at the end of the runs

Traffic



Traffic issues



- Parking on the Nanaimo curve at the park – no parking signs required? Will wait until community centre resolved
- Parking issue on Sioux and Okanagan due to hospital - No Parking signs installed on Sioux
- Cut through Traffic onto Sioux/Okanagan when baseline backs up.

Traffic issues – speed



- This has generated many comments and a significant level of frustration
- Some speeding comes from residents but need to understand the through traffic
- Residents on the following streets most upset:
 - Beaumaris
 - Okanagan
 - Sioux
 - Nanaimo
 - Brian



Traffic contacts

- Register comments with police at 236-1222 x7300
- Send issues by e-mail to:
traffic@qualicum.org

Thank you



- This presentation and the meeting notes will be added to www.qualicum.org